



# 2026

# IMPLEMENTATION

# STRATEGY

[methodisthealth.org](http://methodisthealth.org)

# About Methodist Le Bonheur Healthcare

Methodist Le Bonheur Healthcare (MLH) is an integrated healthcare system based in Memphis, Tennessee, serving communities across the Mid-South through hospitals, ambulatory and specialty care services, physician practices, community outreach programs and partnerships focused on improving community health outcomes.

Founded in 1918 by the United Methodist Church, MLH remains committed to improving the health and well-being of the communities it serves through clinical care, prevention initiatives, education, outreach and efforts designed to reduce health disparities and improve access to care.

In 2026, the Methodist Le Bonheur Healthcare system includes five adult acute care hospitals serving communities across Memphis and the Mid-South, including Methodist University Hospital in downtown Memphis; Methodist North Hospital serving northern Memphis communities; Methodist South Hospital serving southern Memphis and surrounding communities; Methodist Le Bonheur Germantown Hospital serving eastern Shelby County; and Methodist Olive Branch Hospital serving North Mississippi and surrounding areas.

MLH also includes more than 100 ambulatory, outpatient and specialty care locations across the region, including physician practices, outpatient diagnostic services, surgery centers, urgent care centers, and minor medical facilities that expand access to care throughout the Mid-South.

Le Bonheur Children's Hospital (LBCH) is one of the nation's leading pediatric hospitals and serves children and families across the Mid-South through more than 45 pediatric subspecialties, regional outpatient centers, community outreach initiatives, pediatric research programs, and maternal and child health services. Based in Memphis, Tennessee, Le Bonheur includes a 255-bed children's hospital and a satellite pediatric unit in Jackson, Tennessee. As the primary pediatric teaching affiliate of the University of Tennessee Health Science Center, Le Bonheur helps train more than 350 pediatricians and specialists annually. Nationally recognized for excellence in pediatric care, Le Bonheur has been named a *U.S. News & World Report Best Children's Hospital* for 15 consecutive years.

## Purpose

The Community Health Needs Assessment (CHNA) process identifies key health needs through systematic, comprehensive data collection within the communities served. The CHNA serves as a health profile and describes the significant health needs identified collaboratively with the community and the associated gaps in care.

The 2025 CHNA included analysis of public health data, demographic trends, healthcare utilization, and community feedback from stakeholders and residents across Shelby County, Tennessee and DeSoto County, Mississippi. The assessment identified significant health concerns, disparities in outcomes and barriers impacting the health of the communities served by MLH.

This Implementation Strategy outlines the actions MLH will take from 2026 through 2028 to address prioritized community health needs identified through the CHNA process. These tactics focus on improving health outcomes, expanding access to care, strengthening prevention efforts and reducing health disparities among vulnerable and underserved populations.

# Prioritized Community Health Needs

The 2025 Community Health Needs Assessment identified several significant health concerns impacting residents across the Mid-South. The assessment highlighted the continued impact of chronic disease, health disparities, behavioral health needs, barriers to healthcare access and social and economic conditions that influence overall health outcomes.

The CHNA identified significant racial and socioeconomic disparities in health outcomes, with underserved populations experiencing disproportionately higher rates of chronic disease, preventable hospitalization and mortality.

Priority areas were identified using multiple evaluation factors, including mortality data, disease prevalence, disparities in outcomes, healthcare access barriers and community stakeholder feedback. Some priorities were identified based on high mortality and chronic disease burden, while others were identified due to significant public health impact and disparities affecting vulnerable populations.

Based on the findings of the CHNA, MLH identified the following priority areas:

## Primary Priority Areas

- Cardiovascular Health
- Adult Cancer Care
- Human Immunodeficiency Virus (HIV) Prevention and Treatment

## Secondary Priority Areas

- Behavioral Health
- Maternal and Child Health
- Access to Care

## Additional Community Focus Area

- Community Violence Prevention

MLH considers these areas interconnected and recognizes that improving health outcomes requires coordinated strategies that address prevention, education, access to care, chronic disease management and social drivers of health.

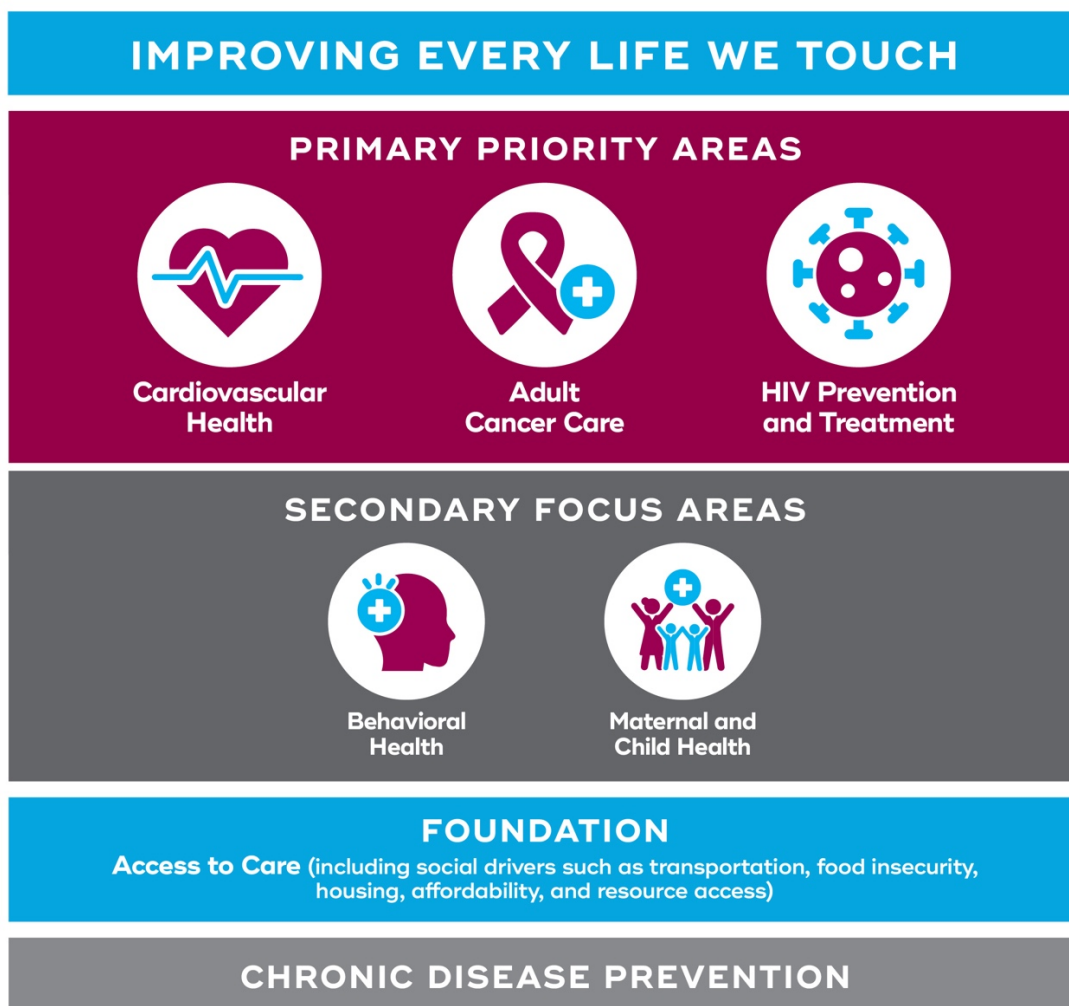
# Framework for Implementation

MLH will address identified community health priorities through:

- Community partnerships and outreach
- Prevention and early intervention initiatives
- Access to care improvement efforts
- Chronic disease management programs
- Patient education and engagement
- Coordination of clinical and community-based services
- Connections to social support resources

MLH will support these initiatives through organizational leadership, clinical expertise, operational resources, financial investment, and collaboration with community organizations serving the Mid-South.

While Access to Care was identified as a secondary priority area through the CHNA process, MLH recognizes that access-related barriers are interwoven throughout all implementation strategies and service line initiatives, including cardiovascular care, cancer screening and treatment, HIV services, behavioral health and maternal-child health programs.





## Cardiovascular Health

### Strategy 1: Improve Cardiovascular Prevention, Access and Chronic Disease Management

The 2025 Community Health Needs Assessment identified cardiovascular disease as the leading cause of death in Shelby and DeSoto counties. The assessment also highlighted high rates of hypertension, obesity, diabetes and stroke, particularly among underserved populations and communities experiencing health disparities.

To improve cardiovascular health outcomes and reduce preventable complications, MLH will expand prevention, screening, education, chronic disease management and access to specialized cardiovascular care.

#### **Goal**

Improve cardiovascular health outcomes through prevention, early identification of risk factors, chronic disease management, patient education and improved access to cardiovascular services.

### Strategy 1.1: Expand Access to Cardiovascular Care

#### **Tactics**

- Increase availability of cardiology appointments in high-demand areas
- Reduce patient wait times for cardiology services
- Expand scheduling capacity for cardiovascular specialty care
- Improve patient follow-up after cardiovascular screenings and appointments
- Connect high-risk patients with transportation and support resources when barriers to care are identified

#### **Metrics**

- Average patient wait time for cardiology appointments
- Number of available cardiology appointments
- Follow-up completion rates after cardiovascular visits or screenings
- Patient access and scheduling measures

### Strategy 1.2: Expand Community-Based Cardiovascular Prevention Programs

#### **Tactics**

- Expand community blood pressure screenings through the Know Your Numbers initiative
- Increase education related to hypertension, obesity, diabetes and cardiovascular risk reduction
- Provide cardiovascular prevention resources in community settings including churches, schools and community events
- Increase awareness of preventive care services and healthy lifestyle practices

### **Metrics**

- Number of community blood pressure screenings conducted
- Number of individuals receiving cardiovascular education
- Participation in cardiovascular prevention programs

## **Strategy 1.3: Strengthen Chronic Disease Management Programs**

### **Tactics**

- Expand Chronic Disease Self-Management Programs (CDSMP)
- Expand Diabetes Self-Management Programs (DSMP)
- Connect program participants to additional healthcare and community resources
- Improve support for individuals managing hypertension, diabetes and obesity

### **Metrics**

- Enrollment in chronic disease management programs
- Program completion rates
- Participant engagement rates

## **Strategy 2: Expand Healthier 901 Community Wellness Engagement**

Healthier 901 is a community-wide initiative launched by MLH to encourage healthier lifestyles and reduce chronic disease risk across the Mid-South. The program promotes physical activity, healthy eating, weight management and wellness education to address obesity and related chronic conditions that contribute to cardiovascular disease and cancer.

A major component of the initiative is the annual Healthier 901 Fest, a free community event that connects residents to wellness resources, preventive health information, physical activity opportunities and community organizations supporting healthy living.

### **Goal**

Promote healthier lifestyles and reduce chronic disease risk through community wellness engagement, preventive education, physical activity initiatives and public awareness efforts.

### **Tactics**

- Conduct the annual Healthier 901 Fest
- Expand public awareness campaigns promoting healthy lifestyles and preventive health
- Increase community participation in wellness initiatives and physical activity programs
- Collaborate with community organizations to support healthy living initiatives

### **Metrics**

- Number of Healthier 901 participants
- Attendance at Healthier 901 community events
- Community participation and engagement measures
- Number of wellness engagement activities conducted



## Adult Cancer Care

Findings from the 2025 Community Health Needs Assessment indicate that cancer remains a leading cause of death in the Mid-South with notable disparities in outcomes affecting underserved populations.

The assessment also identified barriers related to screening access, transportation, health literacy and timely treatment.

MLH will continue expanding prevention, screening, education, treatment and support services to improve cancer outcomes and reduce disparities in care.

### **Goal**

Improve cancer outcomes through prevention, early detection, access to specialized cancer services, patient education, and supportive care resources.

## **Strategy 1: Expanding Access to Cancer Prevention and Screening Services**

### **Tactics**

- Conduct community-based education and cancer screening events
- Increase awareness of breast, colorectal and lung cancer screening services
- Expand outreach efforts in medically underserved communities
- Improve access to transportation and support resources for patients receiving cancer care

### **Metrics**

- Number of cancer screening events conducted
- Number of individuals participating in community education events
- Participation in cancer screening programs

## **Strategy 2: Strengthen Comprehensive Cancer Support Services**

### **Tactics**

- Expand survivorship and support group programs
- Increase education related to nutrition, exercise and wellness during and after cancer treatment
- Collaborate with community organizations providing cancer support resources
- Continue efforts addressing barriers including transportation, food insecurity and health literacy

### **Metrics**

- Participation in survivorship and support programs
- Number of community outreach and education events
- Patient participation and engagement measures
- Access-to-care support measures

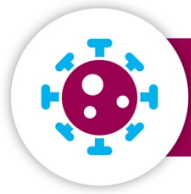
## **Strategy 3: Support Clinical Excellence in Cancer Care**

### ***Tactics***

- Continue investment in specialized oncology services and Centers of Excellence initiatives
- Support recruitment and growth of oncology programs and services
- Conduct program evaluations and gap analyses to improve access and quality outcomes

### ***Metrics***

- Oncology program growth measures
- Access to specialized cancer services
- Quality and performance measures
- Patient experience and engagement measures



## HIV Prevention and Treatment

The 2025 Community Health Needs Assessment identified HIV as a significant public health concern in the Memphis metropolitan area. The assessment noted continued high rates of new HIV infections, particularly among young African American males and underserved populations.

MLH will continue efforts focused on HIV testing, prevention, treatment, education and linkage to care services to reduce transmission and improve long-term outcomes.

### **Goal**

Reduce HIV transmission and improve health outcomes through increased testing, prevention services, treatment access and long-term care engagement.

### **Strategy 1: Expand HIV Testing and Prevention Services**

#### **Tactics**

- Increase HIV testing throughout the MLH system and community outreach settings
- Expand education related to HIV prevention and treatment
- Increase access to preventive services, including Pre-Exposure Prophylaxis (PrEP)
- Increase awareness of available HIV resources and services

#### **Metrics**

- Number of HIV tests conducted
- Number of individuals connected to preventive services
- Participation in HIV education and outreach initiatives
- HIV prevention service utilization measures

### **Strategy 2: Improve Linkage to HIV Treatment and Support Services**

#### **Tactics**

- Increase connections to care for individuals diagnosed with HIV
- Improve access to medications and treatment services
- Connect patients to supportive community resources and services
- Support initiatives improving long-term viral suppression and treatment adherence

#### **Metrics**

- Number of patients connected to HIV care
- HIV treatment engagement measures
- Viral suppression outcome measures
- Support service utilization measures



## Behavioral Health

Findings from the 2025 Community Health Needs Assessment highlighted behavioral health and access to mental health services as key community concerns. Stakeholders emphasized persistent challenges related to affordability, provider access, and fragmented care coordination.

MLH will build on existing efforts to strengthen behavioral health screening, increase education and awareness, improve access to care, and better integrate services across clinical and community settings.

### **Goal**

Improve identification of behavioral health needs and strengthen access to mental health services and support resources.

### **Strategy 1: Expand Behavioral Health Screening and Education**

#### **Tactics**

- Increase depression and behavioral health screenings in primary care settings
- Expand community education related to mental health awareness and support resources
- Increase coordination between behavioral health and primary care services

#### **Metrics**

- Number of behavioral health screenings conducted
- Participation in behavioral health education initiatives
- Connections to behavioral health services
- Behavioral health outreach measures

### **Strategy 2: Strengthen Community Partnerships Supporting Behavioral Health**

#### **Tactics**

- Collaborate with community organizations supporting mental health services
- Improve connections to behavioral health resources for individuals identified through screenings
- Support initiatives improving awareness of available behavioral health services

#### **Metrics**

- Community partnership activities
- Behavioral health referral and connection measures
- Access-to-care support measures
- Community outreach participation



## Maternal and Child Health

The 2025 Community Health Needs Assessment identified maternal and child health as an important community priority, particularly among vulnerable populations experiencing barriers to healthcare access, education, transportation, and social support services.

MLH and Le Bonheur Children's will continue supporting maternal and pediatric programs focused on healthy pregnancies, infant health, parenting support, injury prevention, pediatric specialty access and family-centered community outreach.

### **Goal**

Improve maternal and child health outcomes through education, outreach, support services, and improved access to healthcare resources.

### **Strategy 1: Expand Support Services for Mothers and Children**

#### **Tactics**

- Support community-based programs serving pregnant women, new mothers, infants and families
- Increase education related to healthy pregnancy, infant safety and child wellness
- Improve connections to healthcare and social support resources for vulnerable families
- Collaborate with pediatric and maternal health partners across the community

#### **Metrics**

- Participation in maternal and child health programs
- Number of maternal and child health education initiatives conducted
- Family engagement and outreach measures
- Connections to support services and resources

# Community Violence Prevention

The 2025 Community Health Needs Assessment identified community violence as an ongoing concern impacting youth, families, and underserved communities across the Mid-South.

MLH will continue supporting violence prevention and recovery efforts focused on reducing repeat violent injury, improving family support services, and connecting youth to long-term community resources.

## **Goal**

Support youth and families impacted by violence through intervention services, recovery support, education and connections to community resources.

## **Strategy 1: SHIFT Program**

The Supporting and Healing Individuals from Trauma (SHIFT) program is a hospital-based violence intervention program at Le Bonheur Children's designed to support pediatric victims of violence and their families. The program provides case management, education, behavioral health support, and connections to community services intended to reduce repeat violent injury and improve long-term outcomes for youth impacted by violence.

## **Tactics**

- Increase support services for youth victims of violence and their families
- Expand enrollment and participation in the SHIFT program
- Connect participants to education, counseling and community-based support services
- Support long-term recovery and violence prevention efforts

## **Metrics**

- Number of families enrolled in the SHIFT program
- School engagement and participation measures
- Repeat violent injury measures
- Participant engagement with support services

## Evaluation and Reporting

The MLH Community Outreach Evaluation team will monitor implementation progress and evaluate metrics associated with each priority area and strategy.

MLH will review implementation progress annually and continue collaborating with community stakeholders and healthcare partners to assess needs, evaluate impact, and refine tactics designed to improve community health outcomes.

## Addressing Additional Community Needs

Although this Implementation Strategy identifies prioritized community health needs, MLH recognizes that many additional health concerns impact the communities it serves.

MLH remains committed to supporting community health improvement efforts through ongoing outreach programs, partnerships, education initiatives, prevention services, and investments that address broader community health needs across the Mid-South.

For additional information regarding community programs and outreach initiatives, please visit MLH and Le Bonheur Children's Hospital (LCH) community outreach resources.